

A Bug's Life

A comparison study between the Mason Bee and the Painted Lady Butterfly

Alouette River Management Society

Passport to Education

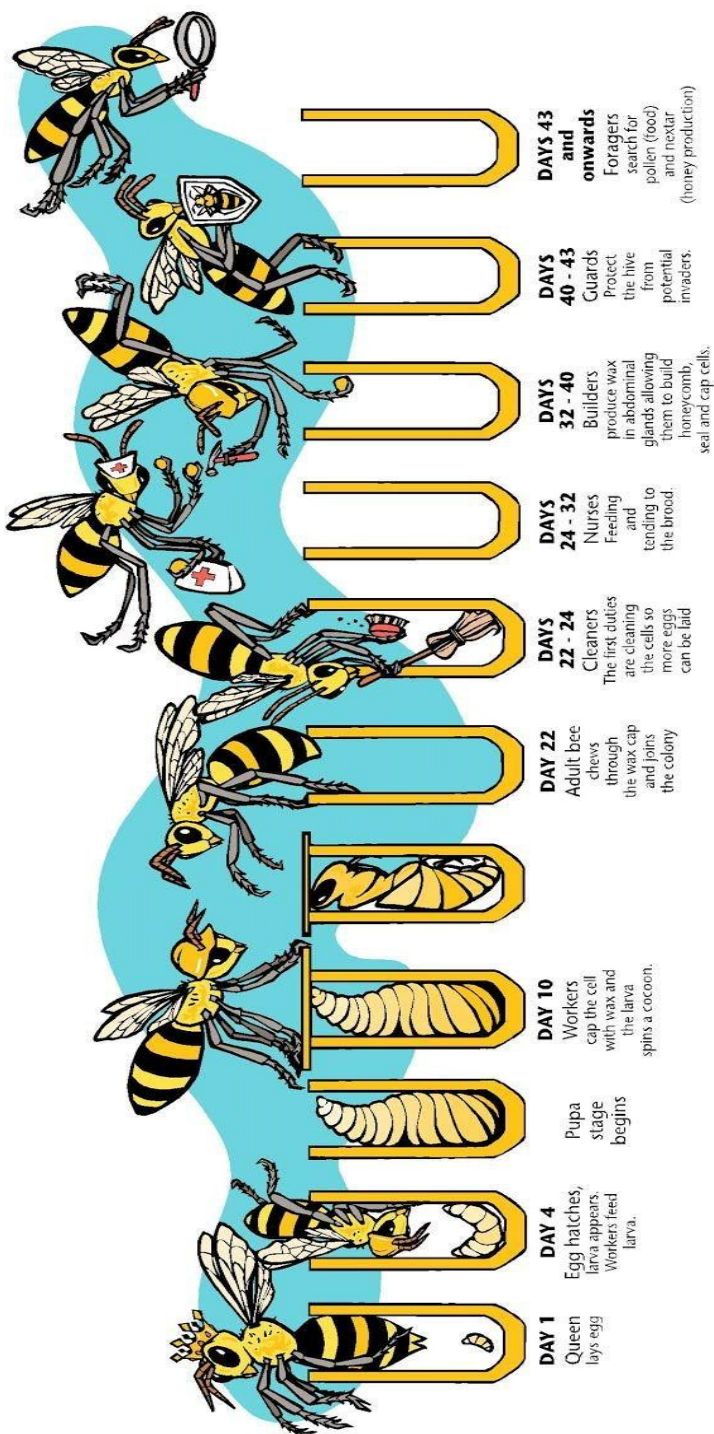


Brought to you by a generous
donation from:

TD Friends of the
Environment
Foundation

These are the lifecycles of the Butterfly and the Mason bee. Can you see the similarities? Can you see the differences?





DAY 1
Queen lays egg

DAY 4
Egg hatches, larva appears. Workers feed larva.

DAY 10
Workers cap the cell with wax and the larva spins a cocoon.

DAY 22
Adult bee chews through the wax cap and joins the colony

DAYS 22 - 24
Cleaners
The first duties are cleaning the cells so more eggs can be laid

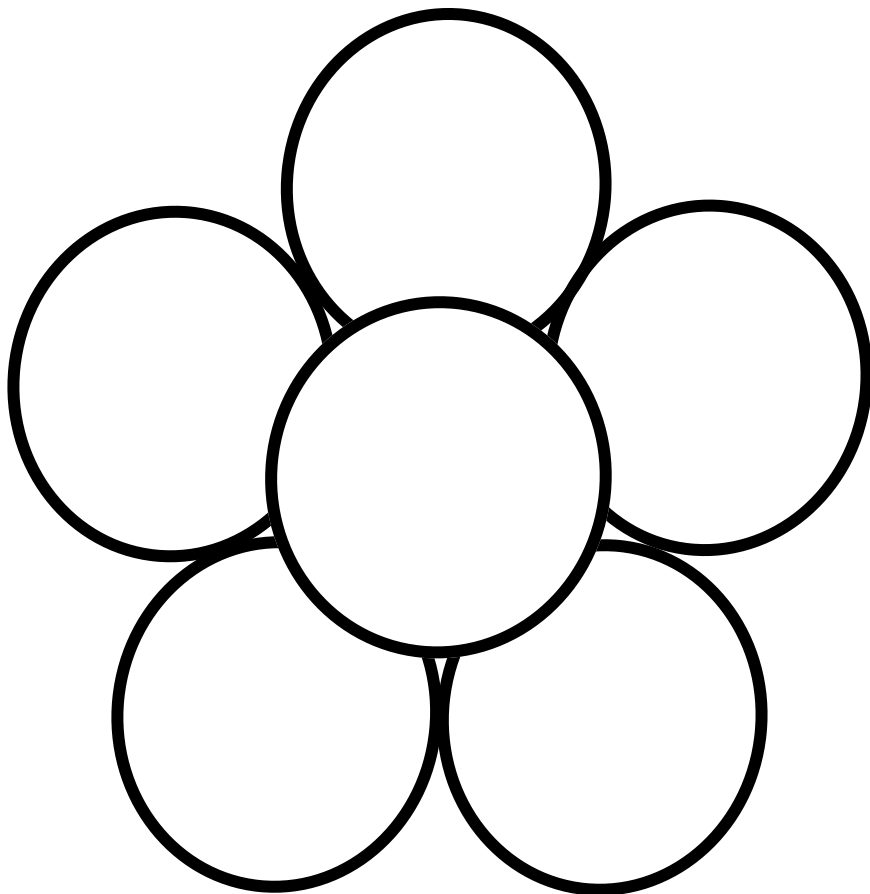
DAYS 24 - 32
Nurses
Feeding and tending to the brood.

DAYS 32 - 40
Builders
produce wax in abdominal glands allowing them to build honeycomb, seal and cap cells.

DAYS 40 - 43
Guards
Protect the hive from potential invaders.

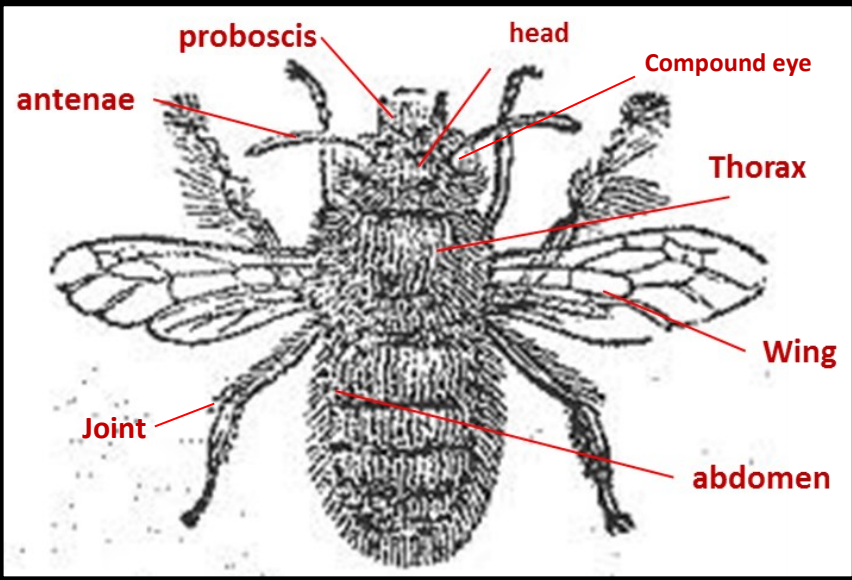
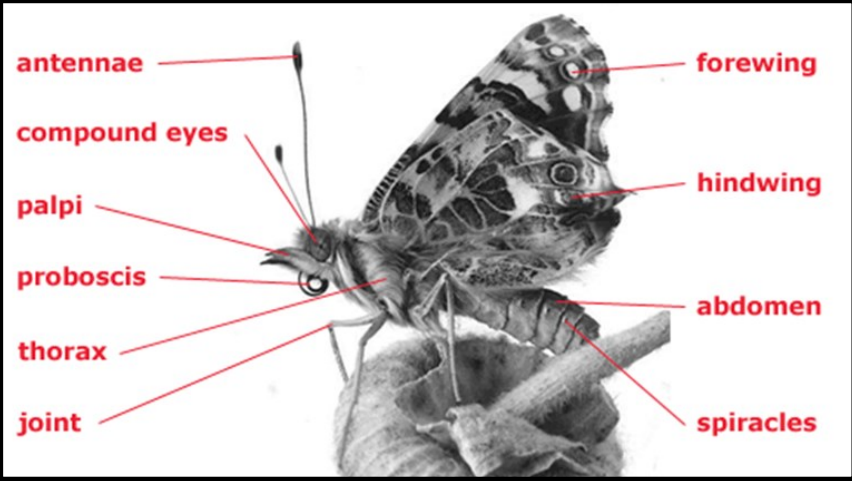
DAYS 43 and onwards
Foragers
search for pollen (food) and nectar (honey production)

Name six different types of pollinators:



Here are two diagrams, one of a Mason Bee, and one of a Butterfly. Circle all of the similarities between the two animals. Put an X on the differences.

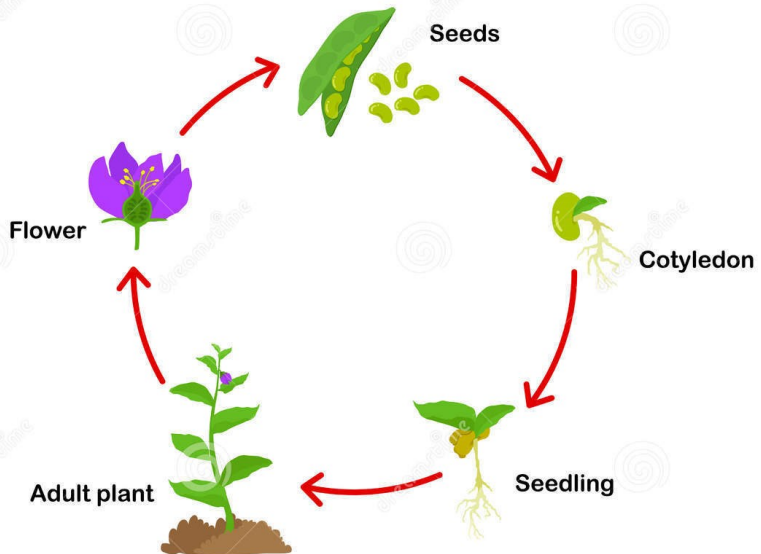
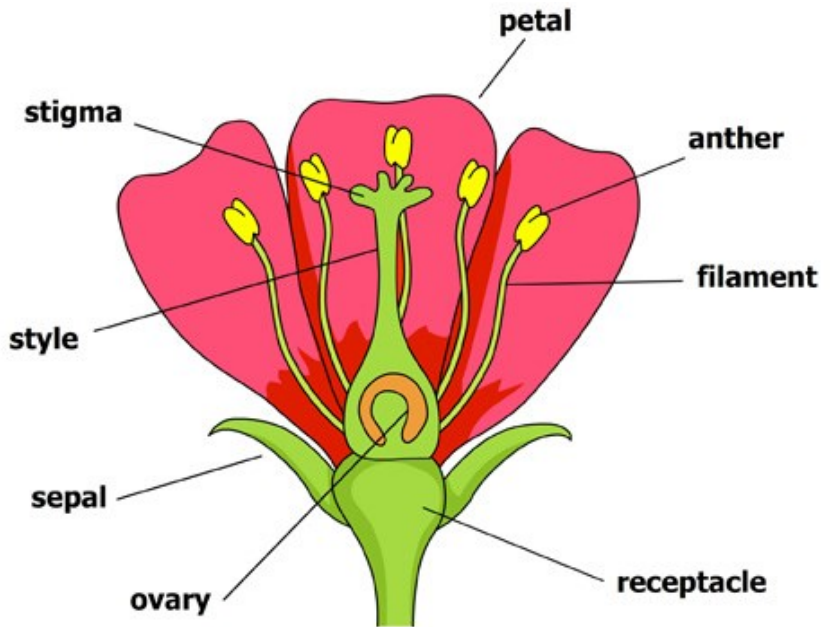
Describe any other differences you may see: _____



Cross out the foods that would not exist without pollinators.



Label the parts of the flower:



Alouette River Management Society

OUR MISSION AS THE ALOUETTE RIVER MANAGEMENT SOCIETY (ARMS) is to sustain

and enhance the integrity of the Alouette Watershed through advocacy, education, collaboration, and stewardship using science-based decision-making.

Become a member!

Appreciate where you are!

Restore what we have!

Motivate others to join you!

Stand up and make a difference!

www.alouetteriver.org/membership

Volunteer | Giving | Opportunities

Please consider joining ARMS as a member, volunteer or if time restricts your involvement please consider making a donation to help us continue offering our programs. As a membership-based organization, the success of ARMS relies on individuals committed to protecting our watershed.

River Heritage Centre

24959 Alouette Road

Allco Park, Maple Ridge, BC

